

**Gender Mainstreaming Policies  
for Government Officers  
(JFY 2011)  
Job and Country report**

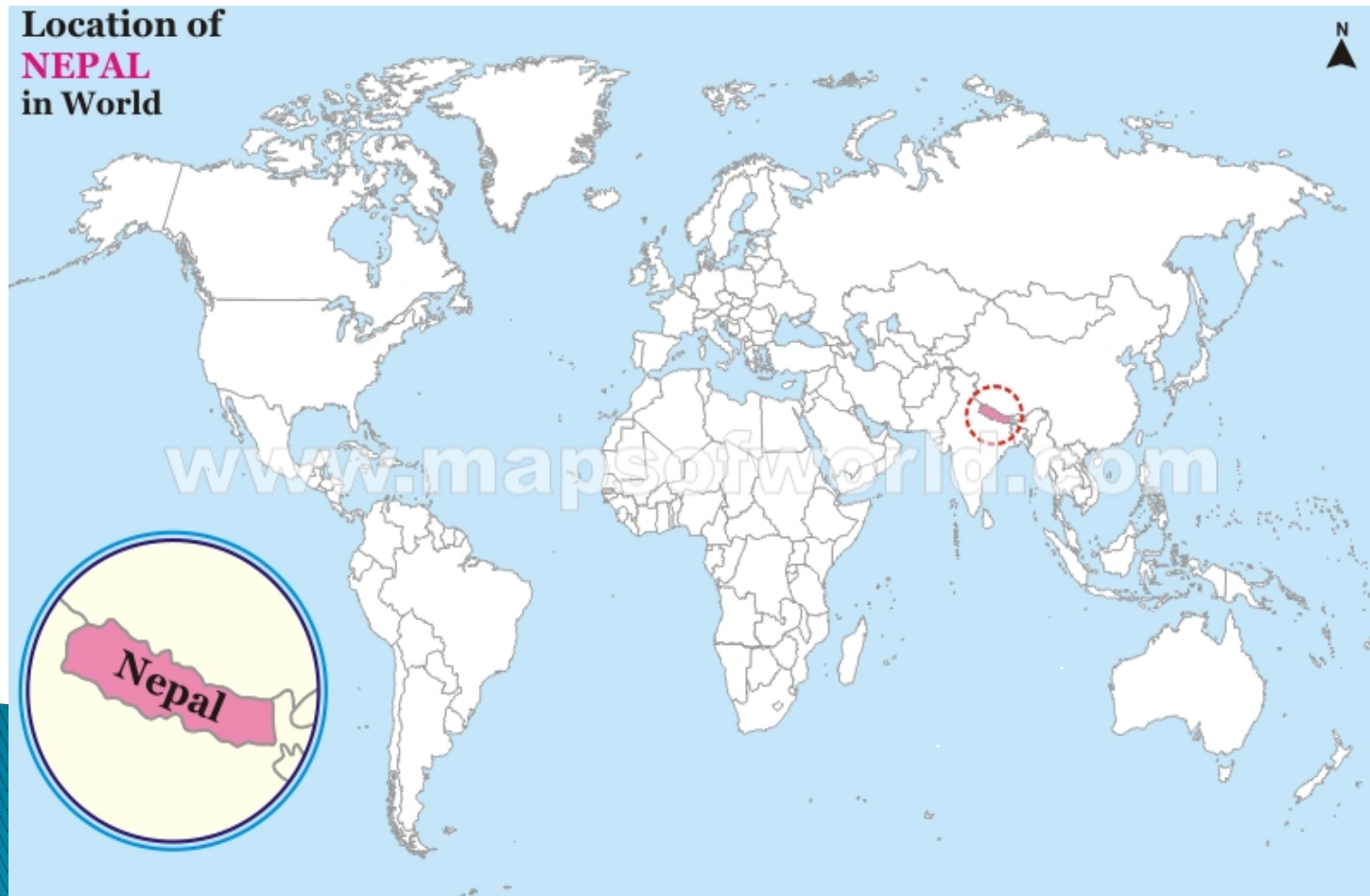
**Manamaya Pageni (Bhattarai)  
Ministry of Women, Children and Social Welfare  
Department of Women and Children  
Nepal**



# 1. Affiliation and country:

- country: Federal Republic of Nepal
- ▶ Political system: Multi Party Democracy
- ▶ Head of the state: president
- ▶ Head of Government: Prime-minister
- ▶ Administrative: Central and local Governance system
- ▶ Political Division: Development region –5, Zone–14, District –75
- ▶ Capital: Kathmandu
- ▶ Legislative: Constitution assembly – 601 (women 197)
- ▶ Location: Nepal is situated in south ASIA between CHINA in north and INDIA is south.

## 2. Basic Information on my Country



# Basic Information on my Country.....



# Basic Information on my Country....

Continent:	Asia
Region:	Southern Asia
Area:	1 471 81 Sq. KM
Population:	26,500,000
Religion:	Hinduism, Buddhism, Islam, Kirat, Christianity etc
Highest Point:	Mount Everest (8848 M)
Lowest Point:	Kechana Kalan (70M)

# Basic Information on my Country....

Nepal's (GDP) as per 2008 : \$12  
billion Economy Position in the world: 115  
Agriculture contribution : 33.5%,  
Other Service Sector : 66.5%

Employment in Agriculture : 76%  
Services: 18%  
Manufacturing/craft-based industry:6%

(Agricultural products — mostly grown in the Terai region – includes tea, rice, corn, wheat, sugarcane, root crops, milk, and water buffalo meat. Industry mainly involves the processing of agricultural produce, including jute, sugarcane, tobacco, and grain)

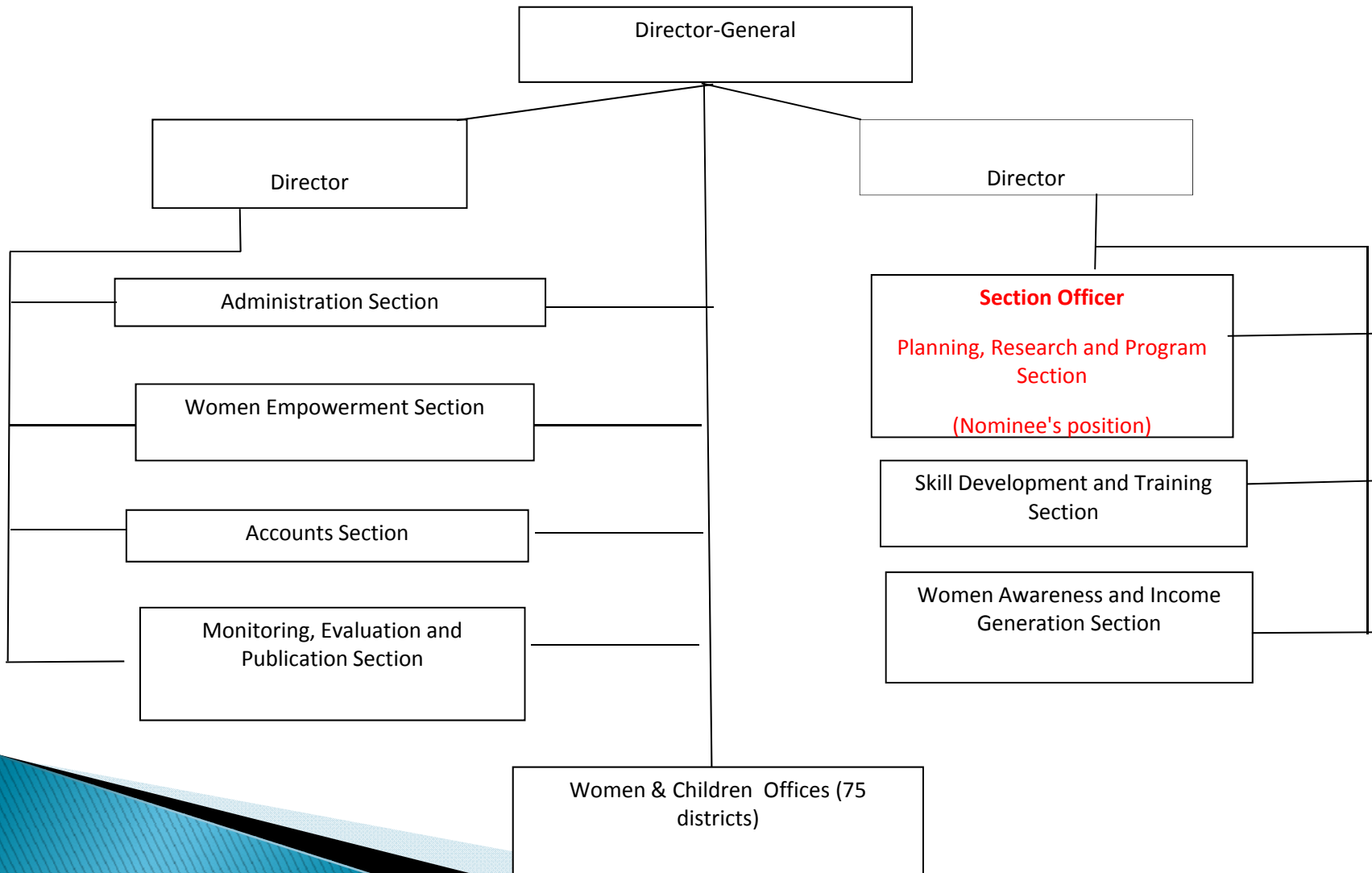
### 3. Three Major Issues in mainstreaming gender in my country

- 1) **Citizenship issue:** The Constitution ensures equal rights for women but not easy access to get citizenship by mother's name.
- 2) **Trafficking issue:** Every year an estimated 12000 women are trafficked to other countries So how to address that problem by preventive measures?, How to create alternative opportunity for vulnerable and marginalized women?
- 3) **Domestic violence issues:** The government has enacted the Domestic Violence Act How to effectively implement it? And how to establish a strong mechanism for controlling domestic violence?

# Organizational Structure of National Machinery

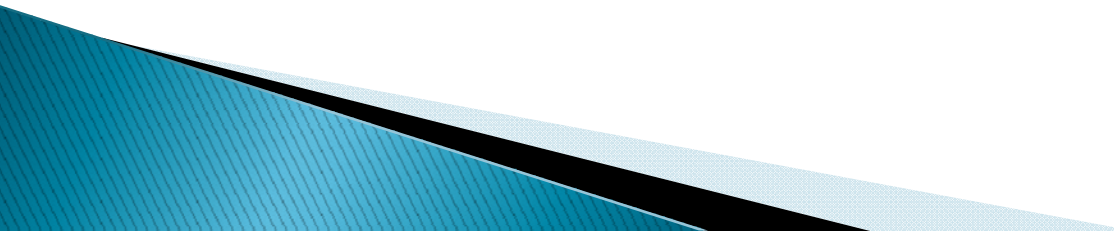
## GoN, Ministry of Women, Children and Social Welfare

### Department of Women and Children





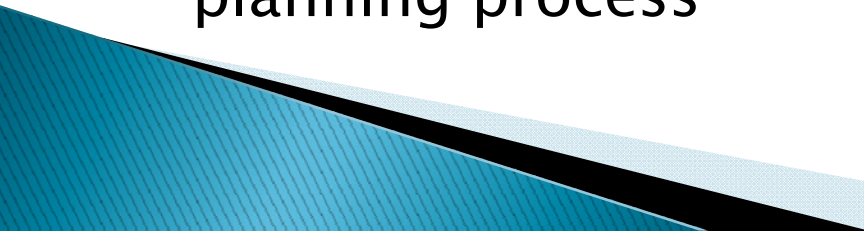
# 4. Job Description

- ▶ Development and implementation guidelines
  - ▶ Formulation of periodic plans and annual programs
  - ▶ Gender mainstreaming and focal agency activities
  - ▶ Ensure gender mainstreaming in the institutional development
  - ▶ Build capacity of the women development program staff in gender mainstreaming
  - ▶ Research activities
- 

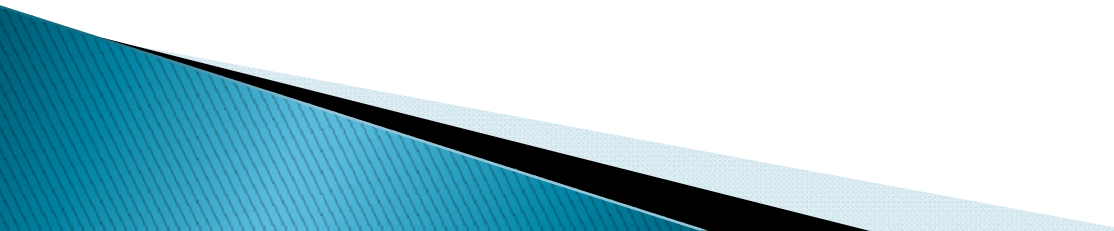
## 5. Issue's to be addressed in mainstreaming gender:

Discrimination between man and women with in service delivery sector

## 6. Justification for choosing the above issue's:

- ▶ Low level sensitization and awareness of government official in line agencies regarding Gender Mainstreaming policy;
  - ▶ Low level of co-ordination with line agencies to address gender mainstreaming activities.
  - ▶ Low level of Gender responsiveness of government staff to give services;
  - ▶ Low prioritize of women's issues in each and every sector;
  - ▶ No meaningful participation to marginalize women (ultra poor, dalit and ethnic group) in local level planning process
- 

## 7. Useful knowledge and skills gained through this program in order to take action against the above issue's:

- ▶ To sensitize all line agencies to mainstream Gender by advocacy and counseling;
  - ▶ To ensure responsiveness and Gender sensitive work culture by advocacy and monitoring;
  - ▶ To build capacity to central and district level government official to implement of gender mainstreaming strategy
  - ▶ To enhance capacity to women's Co-operatives (women's community based organization) for meaningful Participation in local level planning process through social mobilization;
  - ▶ To create enabling environment to women's group for getting budget from local bodies to run empowerment program
- 

## **8. Action plan on mainstreaming gender in my country**

### **1) Project title:**

**Advocacy and counseling on Gender Mainstreaming  
at centre and District level**

### **2) Project period:**

**August 2011 – July, 2012**

### **3) Target area:**

**Center (Department of Women and Children)  
level and Local level (Morang District )**

# Action plan on mainstreaming.....

## 4) Target beneficiary (ies):

Central and District level Government officials and women Co-operatives (Women Community Based Organization) in pilot village.

## 5) Implementing agency:

- ▶ Department of Women and Children (including district office).

## 6) Collaborating Agency:

- ▶ Gender Mainstreaming and Social Inclusion Project (GeMSIP)

# Action plan on mainstreaming.....

## 7) Overall Goals:

Gender equity/ balance achieved at the central and district level pilot village

## 8) Project Purpose:

1. Central and district level Government officials develop capacities to implement Gender mainstreaming strategy guideline.
2. Women co-operatives build capacities to plan and implement project with Gender perspective.

# Action plan on mainstreaming.....

## 9) Activities:

### 1. 1. To organise training

1.1. To have meeting on Gender mainstreaming for line agencies and Development partners at central level

1.2. To conduct gender mainstreaming workshop with central level line agencies, Gender stakeholder group

### 2. To conduct district level gender mainstreaming workshop with district level line agencies,

2.1. To provide Gender Mainstreaming training / orientation to women's co-operatives member by the district trained officers.

2.2. To conduct workshop with 50 women co-operatives members on Gender mainstreaming in pilot village

2.3. To follow-up and monitor to women's co-operatives by district women and children office



# Action plan on mainstreaming.....

## 10) Outputs:

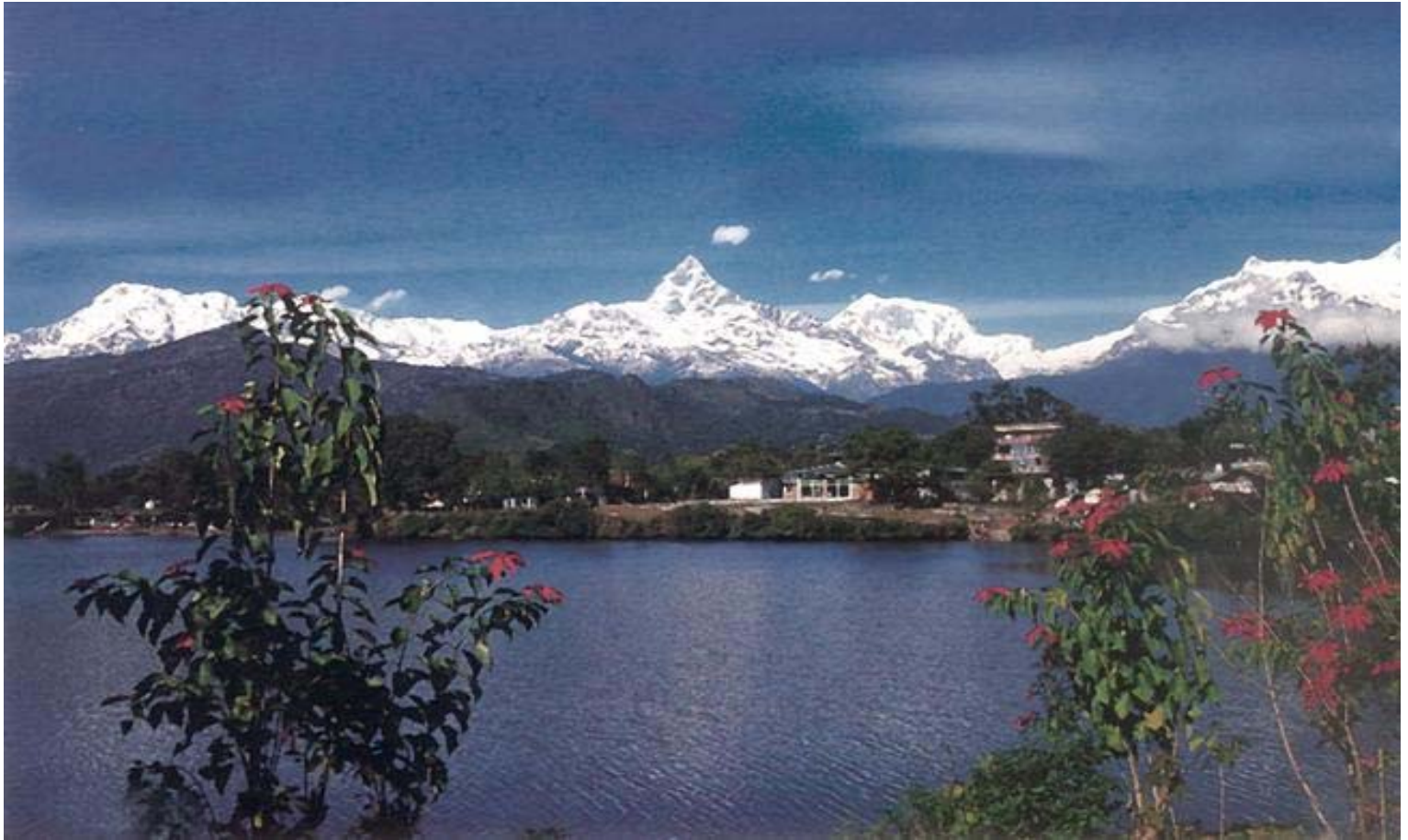
- 1: Capacity to Central and District Women and Children office staff is enhanced;
2. Capacity to women's co-operatives (women's Community Based Organization) is enhanced.

# Scenery



**Mt. Everest (8848 M)**

# Scenery



Mt.Machhapuchre

# Scenery.....



Pashupatinath Temple

# Scenery.....



Lumbini (Birth place of Lord Buddha)

# Scenery.....



Janaki Temple

# Scenery.....



Traditional House

# Architecture



Traditional Mill (water)



# Architecture



Traditional Wooden Carved Window

# Architecture



[www.traveltourisminnepal.blogspot.com](http://www.traveltourisminnepal.blogspot.com)

**Karuwa (Traditional water jug)**

# Architecture



Khukuri (traditional Nepali weapon)

# Society



Women in household work in village

# Activities



**Focus group discussion**

# Activities



Rural entrepreneurship support by WDP

# Culture



Living goddess (Kumari)

# Culture



Cultural Dresses of different ethnic groups



# Festival



Celebrating Deepawali (festival of light)

# Festival



Celebrating Dashain

# Festival



Celebrating Teej Festival

# Festival



Dashain (Swinging)

**THANK YOU**

wGo jfb

**THANK YOU**

wGo jfb