

WELCOME & NAMASTE FROM NEPAL



Job and Country Report
Gender Mainstreaming Policies for Government
Officers (Final PPT)

Presented by: Shrijana Lamichhane-Regmi

Date :June 15(13:30-16:30)and (9:30-12:30),2011

**Name of the Organization: District
Development committee, Syangja.**

Country: Nepal

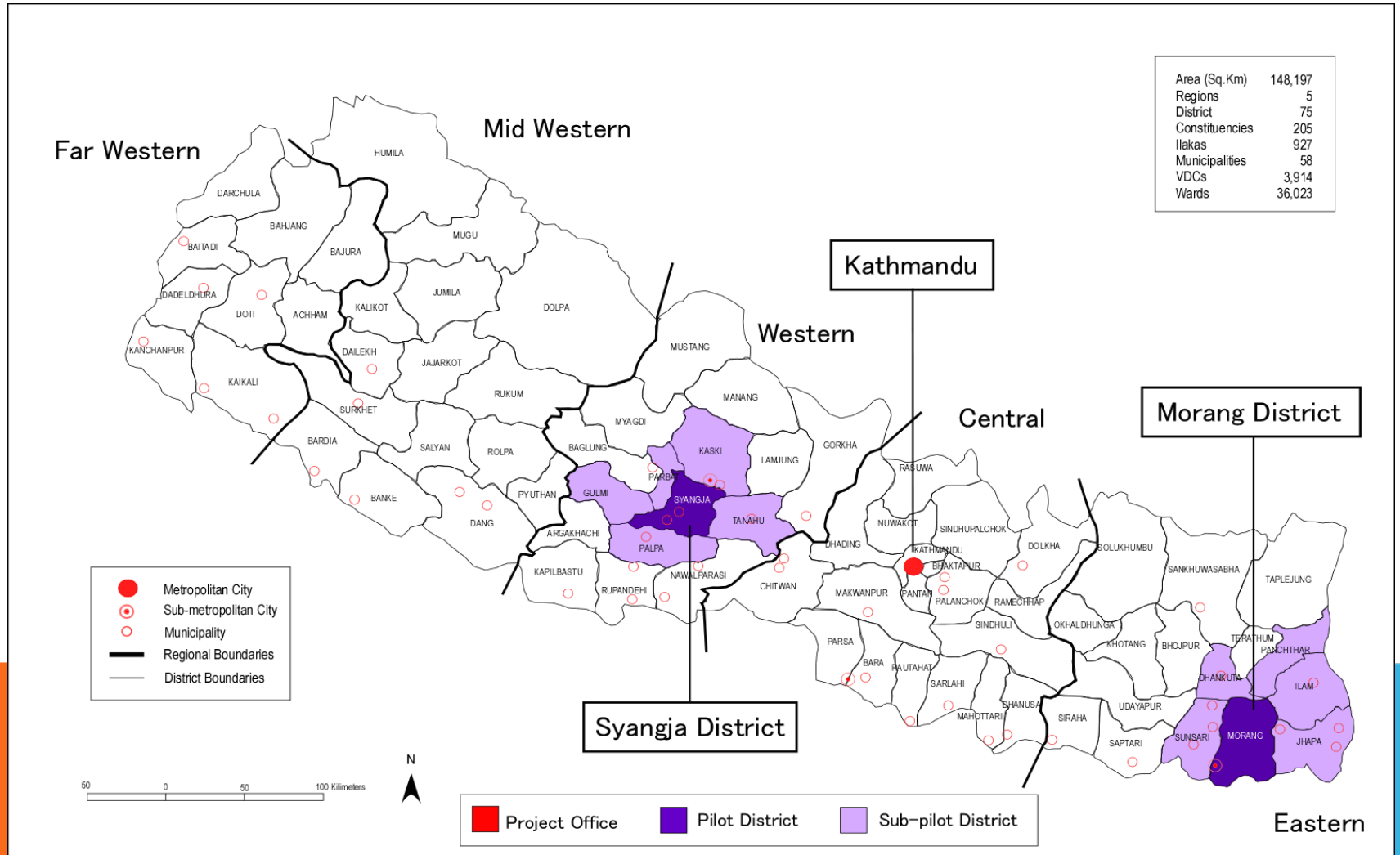
E-mail : lamichhaneshrijana@yahoo.com

Fax : 977-63-420458, 977-63-420426

1. Affiliation and country.....

Country:	Federal Republic of Nepal
Political system:	Multi Party Democracy
Head of the state:	president
Head of Government:	Prime-minister
Administrative: system	Central and local governance
Political Division: 14, District -75	Development region -5, Zone-
Capital:	Kathmandu
Legislative: 601 (women 197)	Constitution assembly -
Location: country situated in south between CHINA in north and INDIA is south.	Nepal is a landlocked ASIA

2.BASIC INFORMATION ..NEPAL AND GEMSIP PILOT DISTRICTS



BASIC INFORMATION ON OUR COUNTRY

Continent:	Asia
Region:	Southern Asia
Area:	147181 Sq. KM
Population:	26, 500, 000
Religion:	Hinduism, Buddhism, Islam, Kirat, Christianity etc
Highest Point:	Mount Everest (8848 M)
Lowest Point:	Kechana Kalan (70M)

BASIC INFORMATION

Nepal's (GDP) as per 2008: \$12 billion

Economy Position in the world: 115

Agriculture contribution: 33.5%,

Other Service Sector: 66.5%

Employment in Agriculture: 76%

Services: 18%

Manufacturing/craft-based industry: 6%

(Agricultural products – mostly grown in the Terai region – includes tea, rice, corn, wheat, sugarcane, root crops, milk, and water buffalo meat. Industry mainly involves the processing of agricultural produce, including jute, sugarcane, tobacco, and grain)

BASIC INFORMATION

Society:

Heterogeneous society all over Nepal but living homogeneously respecting each others religion and culture in respective regions .



3. Three Major Issues in mainstreaming gender in my country

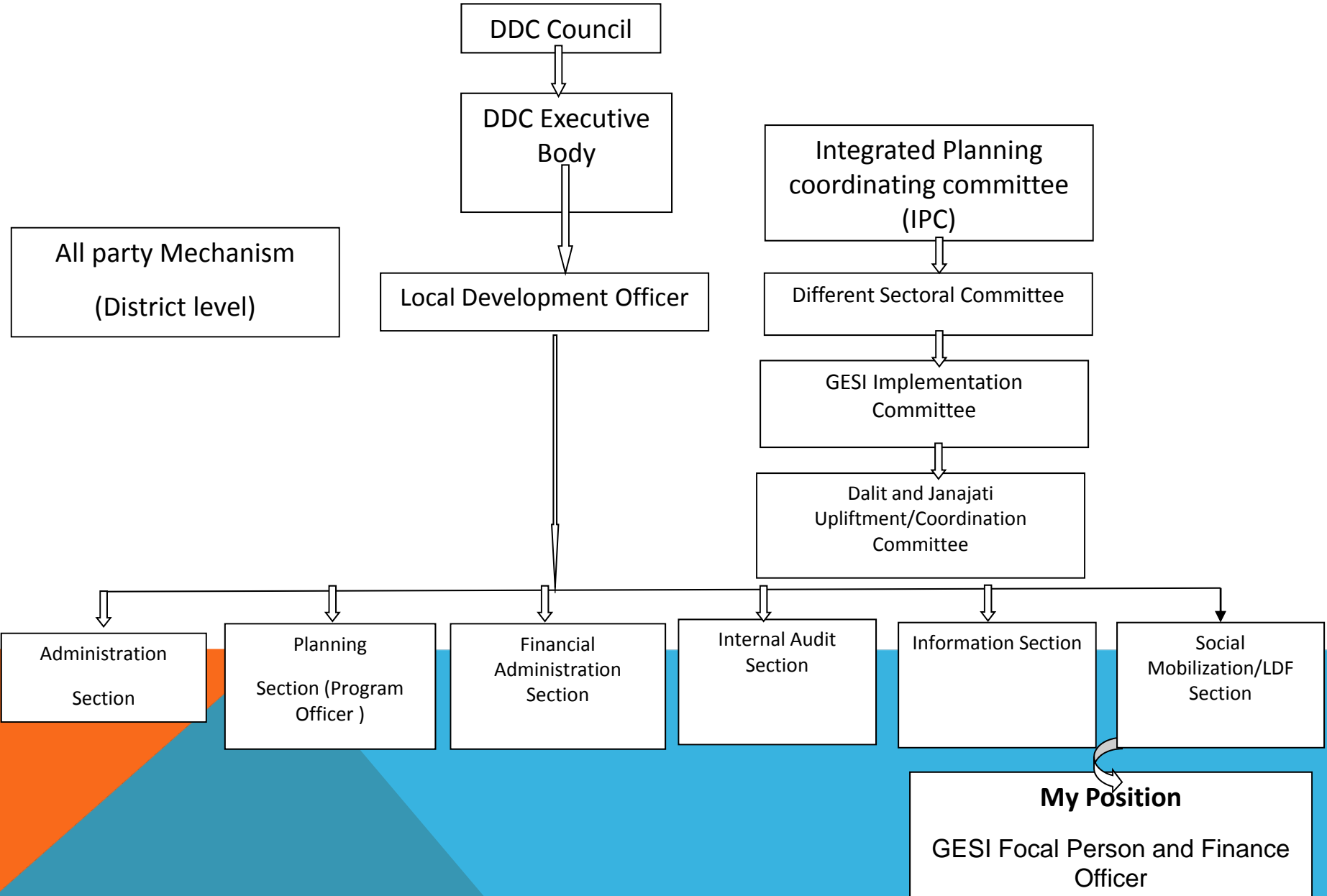
1. Gender equality and social inclusion.

2. Local self-governance


3. Poverty reduction.



ORGANIZATIONAL STRUCTURE OF DDC SYANGJA:



4. Job descriptions:

- 1) To support fully GeMSIP pilot project regarding all related activities.
 - 2) To strengthen GESI implementation committee.
 - 3) To broaden and advocate GESI program within DDC level policy makers and stakeholders.
 - 4) To organize and facilitate training, seminar and workshop in gender mainstreaming and social inclusion.
- 

5. Issue(s) to be addressed in mainstreaming gender

Low access to participation in the marginalized (especially women) group in their local level planning process.



6. Justification for choosing the above issue(s):

No sensitized political party members

Lack of operational guideline from gender equality and social inclusion (GESI) perspectives

Low motivation of government officials



7. Useful knowledge and skills gained through this program in order to take action against the above issue(s):

To sensitize all party mechanism district level

To Publicized GESI operation guideline, manual, strategic report, related to the gender equality & dissemination into the local institution

To conduct Gender mainstreaming & social inclusion orientation program to government official and district level line agencies

8. Action plan on mainstreaming gender in my country

1) Project title:

Gender equality and social inclusion (GESI)
guideline publish & implementation.

2) Project period:

August 2011 - Oct, 2011

3) Target area:

Syangja District



Action plan on mainstreaming

4) Target beneficiary (ies):

All party mechanism & District level line agencies

5) Implementing agency:

District Development Committee, Syangja.

6) Collaborating Agency:

Gender Mainstreaming and Social Inclusion Project (GeMSIP)

Action plan on mainstreaming

7) Overall Goals:

Gender equality and social inclusion (GESI) ensure at district level.

8) Project Purpose

District Development Committee and all party mechanism implement GESI (Gender equality and social inclusion) guideline.



Action plan on mainstreaming

9) Activities

1. To conduct orientation meeting all party mechanism & District level line agencies (31 members).

1.1. To print GESI guideline.

1.2. To conduct work shop with all party mechanism and district level line agencies

10) Outputs

1. District line agencies and all party mechanism Understand GESI guideline.

SOME PHOTOS



BHOTO JATRA FESTIVAL...



PASUPATINATH TEMPLE ...



PYARAGLAYDING



PHEWA LAKE POKHARA...



SIRUBARI VILLAGE IN SYANGJA...



ANNAPURNA HILL...



TRADITIONAL HOUSE OF GURUNG COMMUNITY...



LIVING GOAD(KUMARI) ...



RHINOS IN CHITWAN (WORLD HERITAGE PLACE)



NATIONAL FLAG...



THANK YOU

